



# I-SPICEE

## Information Session

March 30, 2023



# Welcome!

What health equity issues are impacting your community?

What needs to change?

How can we work together to make this change? What can we learn?

Information at  
**[integracare.org/ispicee](https://integracare.org/ispicee)**

## Introducing ourselves

- **Q&A** – we'll track questions in chat and address them at the end.
- **Recording** – we'll share this video.
- **Slides** – we'll share these slides.

# Purpose and Agenda Today

Our purpose today is to introduce the I-SPICEE funding opportunity to community-based organizations who may want to apply, answer questions, and build on Integra's commitment to health equity.

- |    |                     |            |
|----|---------------------|------------|
| 1. | Background          | 10 Minutes |
| 2. | I-SPICEE            | 10 Minutes |
| 3. | Application Process | 10 Minutes |
| 4. | Q&A                 | 25 Minutes |

# About Integra Community Care Network

ACO based in Rhode  
Island

Part of the Care New  
England Health System

Includes CNE Medical  
Group, Rhode Island  
Primary Care, South  
County Health

March 30, 2023

**What's an  
ACO?**



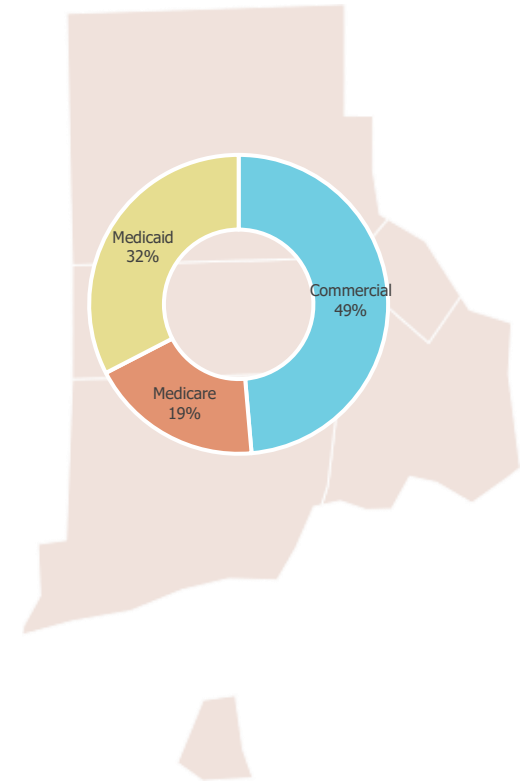
160,000 ACO  
covered lives

950 providers



260 primary care  
providers in 100  
practices

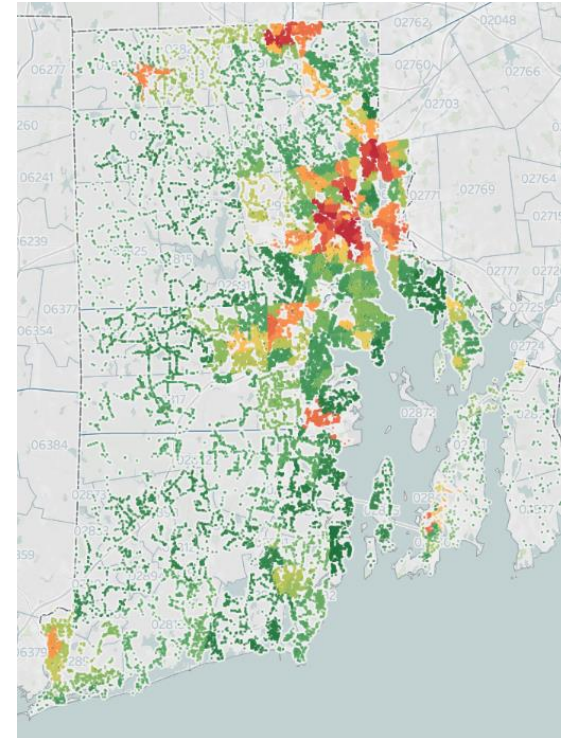
4 community  
hospitals



# Integra's population

- Integra's population is statewide with concentrations in Warwick, Cranston, Providence, Pawtucket.
- 156,000 members total
  - 52,000 Medicaid (AE)
  - 30,000 Medicare
  - 74,000 commercial
- A third are under age 18

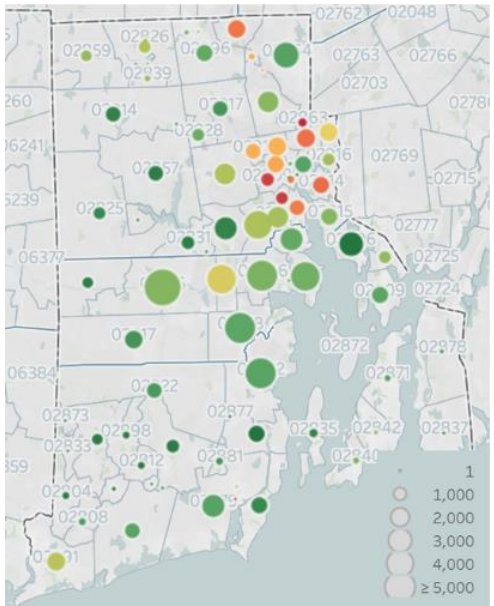
*Colors in the map show neighborhood-level Social Vulnerability Index (SVI).*



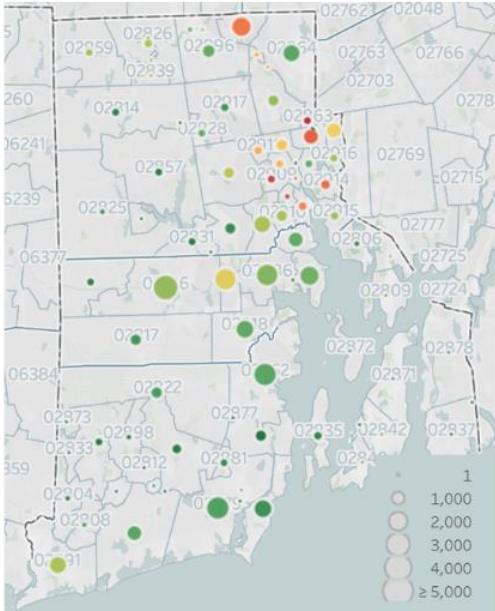
# Integra's population and health equity

Medicaid members are more concentrated in areas with high social vulnerability.

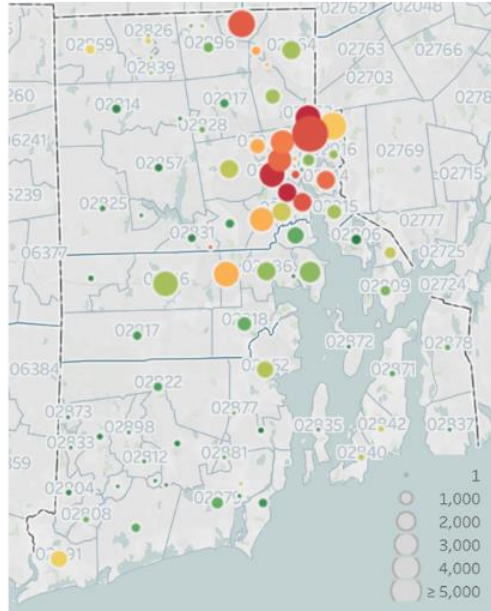
**Commercial Insurance**



**Medicare/Medicare Advantage**



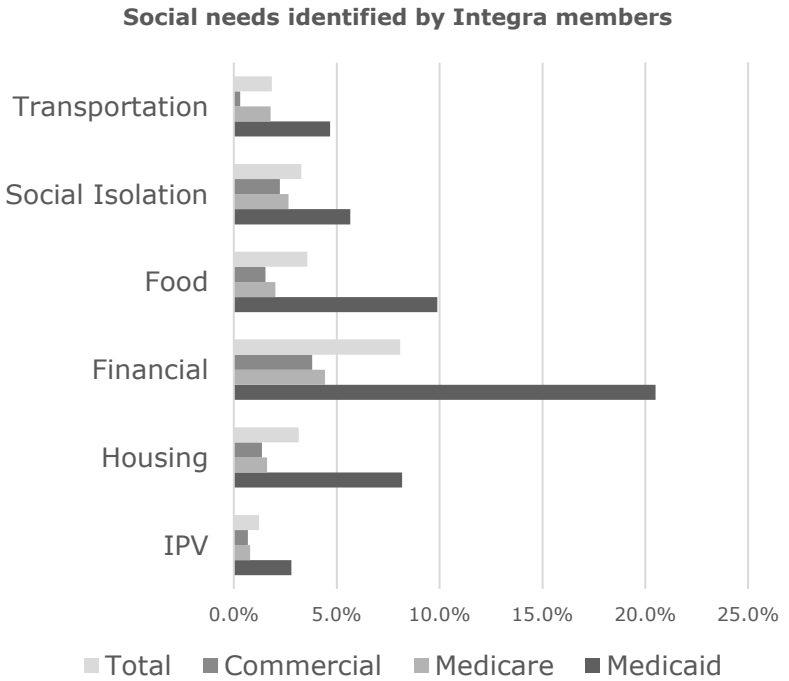
**Medicaid**



March 30, 2023

# Integra's population and health equity

- Chronic disease burden varies by payer type.
- Disparities in quality performance by payer.
- More hospital use among older adults and low-income patients.
- Behavioral health is driver of hospital use.
- Social needs are concentrated in Medicaid.
- Financial stress, food, social isolation, and housing are most frequent needs.
- Most disparities are more dramatic by payer than by Race, Ethnicity and Language—but our data has limitations we're working to fix.





# What is Health Equity?

**“Health equity means that everyone has a fair and just opportunity to be as healthy as possible.**

This requires removing obstacles to health such as poverty, discrimination, and their consequences, including powerlessness and lack of access to good jobs with fair pay, quality education and housing, safe environments, and health care.”

*Robert Wood Johnson Foundation*

I-SPICEE aims to engage community to improve health equity.

- I-SPICEE = Integra Social Partnerships Initiative for Community Engagement & Equity
- Builds on past community engagement efforts

# Integra and community engagement

“Community engagement” means collaborating with organizations and people impacted by health equity issues to share knowledge, plan strategy, and take action to improve health.

We **engage community** to:

- Be **effective** in our programs
- Be **equitable** in our approach
- Contribute to an **ecosystem** of conditions that drive health in Rhode Island.

# Integra Social Partnerships Innovation Initiative

I-SPII asked CBOs “what can you do about social determinants of health?”

## 2019: RFP to Community Orgs

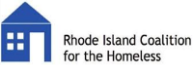
## 2020 – 2021: 4 Pilots

## 2021 – 2022: Program Evolution



Vida Sana: lifestyle change for Spanish speakers with diabetes & other metabolic illness

Referred	Enrolled	Completed
14	4	2



Housing & case management for people experiencing homelessness

Outreached	Enrollment In Case Mgmt.	Housed
6	5	5



Home assessment and remediation to manage asthma and create healthy homes

Households Enrolled	Assessments	Remediations	Relocations
6	5	4	2



VeggieRx: vegetable shares to food insecure families

Households Served	Individuals served	# of bags received	Pickup vs. Delivery
28	119	587	40%/60%

### Homelessness

- Expanded partnership with House of Hope to house 30+ members
- Healthcare & Homelessness Working Group co-convened with RICEH

### Food Access & Equity

- Expanded VeggieRx food program with Southside Community Land Trust
- Ongoing collective impact work

I-SPICEE asks community organizations to collaborate with Integra to drive health equity.

What health equity issues are impacting your community?

What needs to change?

How can we work together to make this change? What can we learn?

## Health equity issues for I-SPICEE include

**A health-related social need** that isn't being met by existing services

**An access gap** where services aren't effectively or equitably reaching a community or population

**A quality gap** where services are of lower quality or poorer fit for a community or population

**An illness or health risk** disproportionately impacting a community or population

**A power imbalance** where a community or population doesn't have a say in conditions affecting their health

**Social drivers** like systemic racism, ablism, or anti-LGBTQ bias that interfere with everyone having a fair and just opportunity to be healthy.

# What can we do together about health equity issues?



Providing a service



Removing an obstacle



Engaging community



Open invitation

I-SPICEE will fund collaboration between CBOs and Integra to bringing your expertise to our shared work.

We are asking your expertise and ideas.

What does your organization know about health equity issues and solutions?

We expect to fund 3 partnerships.

- 18-month project period
- Up to \$125,000 in funding per partnership



## Who is eligible?

- CBOs with physical presence, track record, community credibility, and active programming in RI.
- Networks, Health Equity Zones (HEZes). Please designate lead agency.
- Organizations at all levels of technical capacity
- 501(c)3 status or fiscal sponsor—others on a case-by-case basis.
- We particularly seek organizations with leadership and roots in communities most impacted by health inequities.

## Awarded partnerships will have:

Strong **understanding of the shared health equity problem**

**Strategy** for addressing this issue during the project period

**Project Manager** with committed time, sufficient authority  
-Minimum 10 hours/week, existing staff member

**Strategy to engage community members** in guiding project, building on CBO's track record of trust and engagement

**Assurance** leadership (e.g. board of directors) supports project

# What we'll do together



## **I-SPICEE Kickoff & Planning Period (2-3 months)**

- Action & Evaluation planning
- Relationship building
- Compliance



Final Action Plan

## **Action plan implementation (14 months)**

- Implement the action plan!
- Monthly project team meetings
- Embed in relevant meetings at Integra
- Organize 1-2 “Community Rounding” activities
- Integra “CHW buddy” liaison



Midpoint Report

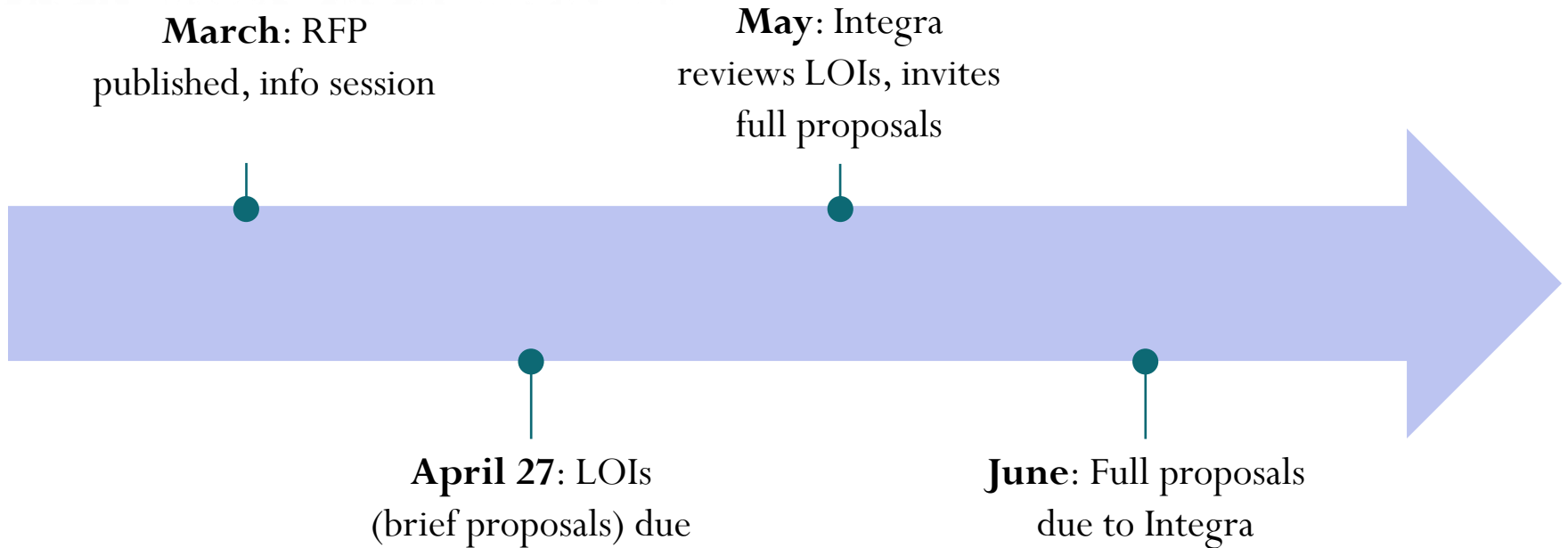
## **Wrapping up (1-2 months)**

- Evaluation complete
- Evaluation and Sustainability



Final Report & Presentation

# Application Process Timeline

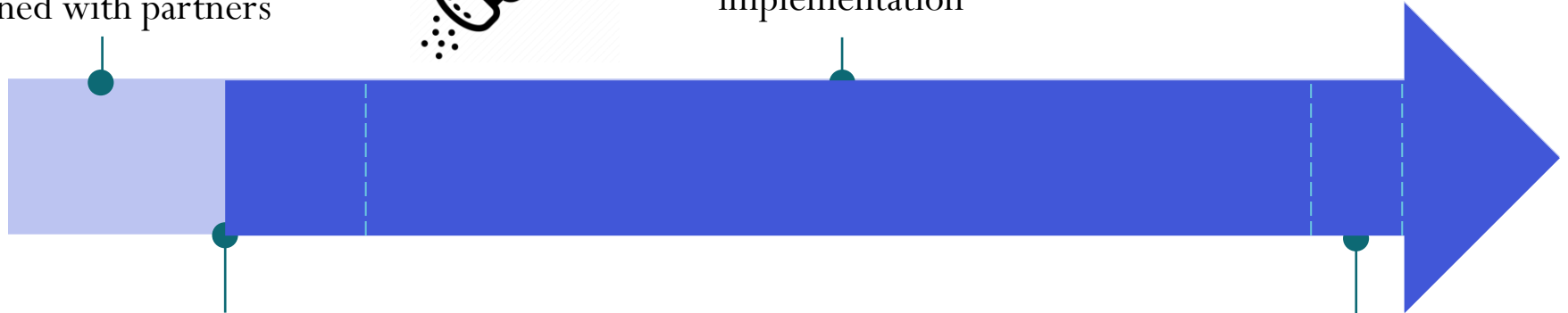


## I-SPICEE Timeline

**July - August:** Awards announced, contracts signed with partners



**Dec '23 – Jan '25:**  
Action plan implementation



**Sept - Nov:** I-SPICEE  
kickoff & planning period

**Feb '25:** I-SPICEE  
wrap-up and report

# Application Process – Letter of Intent (LOI):

## Application Coversheet

- Download from [integracare.org/ispicee](https://integracare.org/ispicee)
- Complete and sign

### Letter of Intent (LOI) Application Coversheet

Integra Social Partnership Initiative for Community Engagement & Equity (I-SPICEE)

Applicant Organization or Network Name	Click here to enter text.		
Website	Click here to enter text.		
Office Address	Click here to enter text.		
Applicant Type (check one)	<input type="checkbox"/> Individual organization		
	<input type="checkbox"/> Network/Consortium If checked, please specify:	Lead/S Backbone Agency	Click here to enter text.
	Member Organizations	Click here to enter text.	

Please specify a primary point of contact for this application

Name	Click here to enter text.	Title	Click here to enter text.
Phone	Click here to enter text.	Email	Click here to enter text.

Project Summary (1-2 sentences maximum)
Click here to enter text.

**Leadership support:** Our organization or network wishes to apply to be a funded partner in the Integra Social Partnerships Initiative for Community Engagement & Equity (I-SPICEE). The goal of this initiative is to identify, understand, and collaborate to address health inequities impacting Integra's attributed population. This initiative will require a significant investment of time, effort, and resources. I have reviewed the RFP and attached proposal, and affirm our organization's readiness, capacity, and leadership support for this initiative.

Name	Click here to enter text.
Title	Click here to enter text.
Signature	
Date	Click here to enter text.

**Submission instructions:** please review the I-SPICEE Request for Proposals (RFP) carefully for context, purpose, activities and eligibility. To submit an LOI, complete this coversheet and attach it to an email, along with a separate proposal of no more than three (3) pages, single-spaced with 11-point font and normal margins, that responds to the narrative questions in Section 4 (page 9) of the RFP.

Attach coversheet and narrative to an email to Brady Dunklee, [bdunklee@carine.org](mailto:bdunklee@carine.org), due no later than April 27, 2023, at 5:00pm. Integra may invite applicants to submit full proposals on the basis of this LOI submission.

# Application Process – Letter of Intent (LOI):

## Narrative Proposal

- No more than three (3) pages, single-spaced with 11 point font and normal margins
- PDF format preferred

## Application Process – Letter of Intent (LOI):

1. What health equity issue(s) are you proposing to work on? Why? Who is impacted?
2. What are you proposing that we do together? What specific services or strategies to remove obstacles to health equity are needed?
3. How would you involve people who are impacted by this health equity issue in guiding our work together?



## Application Process – Letter of Intent (LOI):

4. Why is your organization or network well-positioned to work on this health equity issue?
5. Who at your organization will be the Project Manager?
6. In general terms, please briefly describe the kinds of expenses you would anticipate including in the budget. Expenses should include a portion of time that existing staff member(s) would dedicate to this project.

# Application Process – Letter of Intent (LOI):

**Due April 27 5:00pm**

- Email Coversheet and Narrative as attachments to Brady Dunklee, [bdunklee@carene.org](mailto:bdunklee@carene.org)
- Please include the phrase “I-SPICEE Proposal” in your subject line

## Application Process – Full Proposals:

We will invite a smaller group to prepare full proposals due in June.

Full proposals will include:

- Narrative with greater detail (6 page maximum),
- Logic model
- Budget

## Application Process – Selection Criteria:

- Completeness
- Health Equity Issue Alignment & Significance
- Health Equity Strategy
- Community Involvement
- Capacity & Readiness
- Budget
- Sustainability

# Summing up

Q&A

Information at  
**[integracare.org/ispicee](https://integracare.org/ispicee)**

